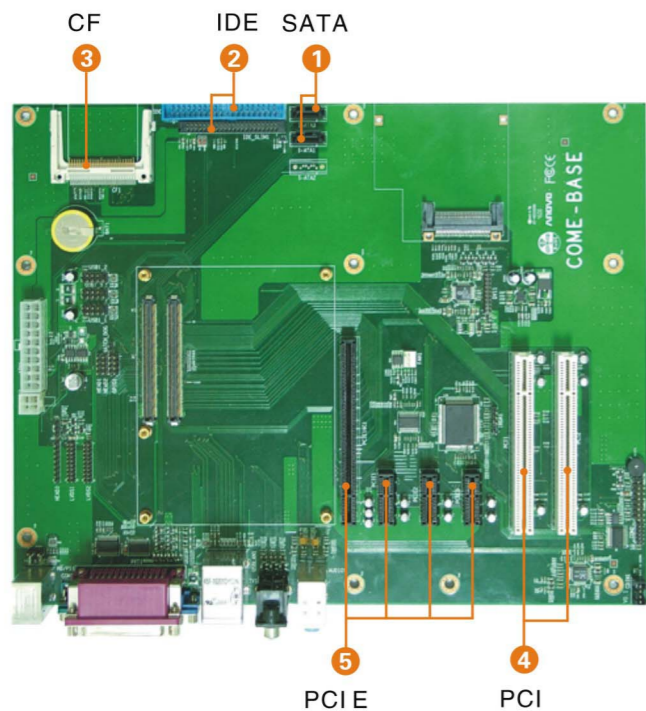


# COME-BASE



- 1 SATA
- 2 IDE
- 3 CF

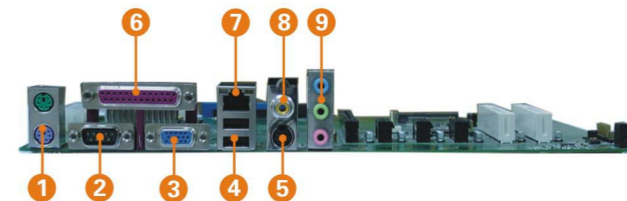
- 4 PCI
- 5 PCI E



## Spec

- ◆ Form Factor COM Express
- ◆ CPU NA
- ◆ Memory NA
- ◆ Chipset NA
- ◆ BIOS NA
- ◆ Watchdog NA
- ◆ SIO W83627THF
- ◆ Expansion slot 1 x PCI E x 16, 3 x Mini PCI E x 1, 2 x PCI
- ◆ I/O 1 x CF, 1 x Express Card

- 1 x PCI E x 16
- 3 x Mini PCI E x 1
- 2 x PCI
- 3 x SATA
- 1 x IDE, 1 x Mini-IDE
- 2 x PS/2
- 2 x RS-232
- 1 x Parallel Port
- 1 x CF
- 1 x Express Card
- 1 x DVI
- 1 x 48 bit LVDS
- 8 x USB
- ◆ Operation Temp -40°C~60°C
- ◆ Relative Humidity 5°C~95°C
- ◆ Dimension 305mm x 244mm



- 1 PS/2
- 2 COM
- 3 VGA
- 4 USB
- 5 S-VIDEO
- 6 并口
- 7 网口
- 8 AV
- 9 音频

## Features

- ◆ COM Express
- ◆ Supports 8 x USB2.0, 3 x SATA

## Accessories

- 1 x Manual
- 1 x Dirver
- 1 x Warranty Card